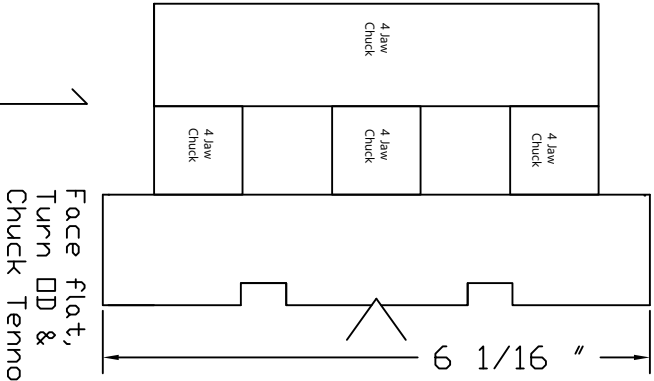
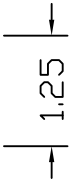
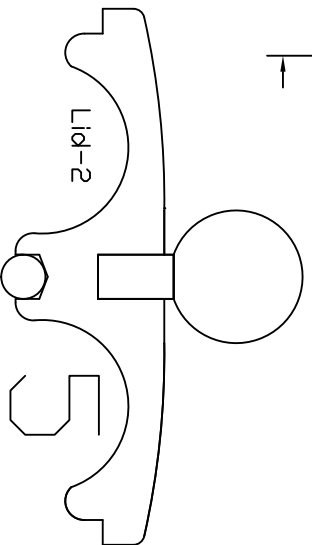
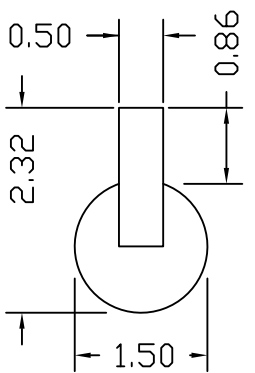


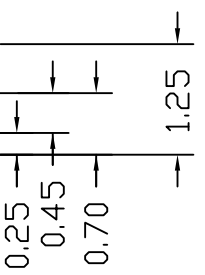
Bravery Bead Box Lid 2019-01-08a RJF

Material List,

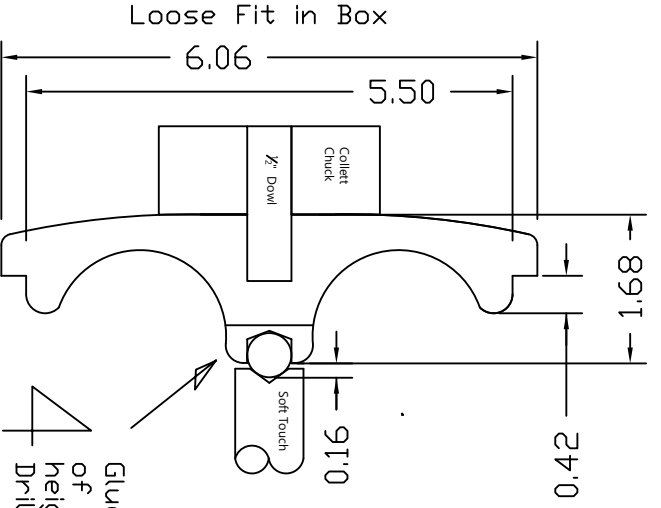
- 1 ☐ F F 6 1/4" Dia X 1 1/4" Thick
- 1 ☐ F F 2" Square X 1/2" Thick



1 Face flat, Turn OD & Chuck Tennon.



2 Turn OD & Top Profile Drill/Ream 1/2" hole. Sand Seal & Finish.



3 Turn Underside ensure 1/32" clearance between Lid & Body. Sand Seal & Finish.

4 Glue on a 2" square of wood 1/2" thick for height. Drill/Turn Snug Hole and Glue in Marble. 2 part Epoxy. Sand Seal & Finish.



Glue in Knob. Buff.